

Lane/3000

Designed for fast payment at lane

- ▶ Robust design for even the most demanding situations
- ▶ High-end keypad for a seamless PIN entry
- ▶ Easy to integrate at any lane and any retail kiosk
- ▶ Modular version to optimise total cost of ownership



Designed to manage thousands of transactions per day, the Lane/3000 is a cutting-edge retail PIN Pad, ideal for busy retailers. Available in two forms, retailer can choose between a modular or a non-modular version.

Two modules available

While the 'non-modular' model focuses exclusively on processing EMV payments for multilane checkouts, the 'modular' model includes optional high-end features upgradable in the field such as a camera, WiFi or Bluetooth. The benefit of having two variations means that businesses can choose whether they want to focus on the core payment or offer more flexibility by promoting a range of other innovative payment and communication options.

Tough security

The Lane/3000 is certified and fully compliant with the latest global and local PCI regulations. The Telium TETRA OS has been future-proofed with top-of-the-line cryptography software and Ingenico's world-class peer-to-peer encryption technology to keep data safe. Designed to be fixed to each lane, Lane/3000 is equipped with anti-theft systems, such as Kensington locks, to strengthen physical security.

Designed for retailers

Conceived for an intensive retail usage, the Lane/3000 is featured with a heavy duty magnetic stripe and smartcard readers optimized to boost transaction speeds. Its very large dedicated contactless card reader zone speeds up checkout times for customers. With its compact and robust design, it integrates into any retail environment, including semi-attended retail store kiosks.

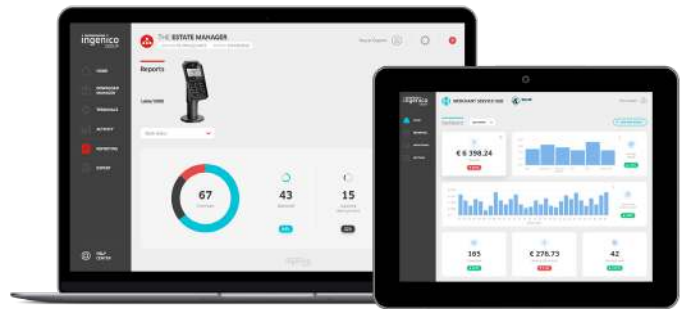


Compatible with Ingenico's suite of services

Keeping the solutions connected, the Lane/3000 works in unison with Ingenico's supporting service platforms, meaning retailers will have access to business services such as back office reporting. Software updates and day-to-day support deliver a hassle-free experience for those using this innovative range.



Lane/3000 is supported by our Cloud Services



| | | | MODULAR | NON-MODULAR |
|-----------------------|-----------------------------------|--|---------|-------------|
| Processor | • Applications & Crypto Processor | • Cortex A5 | ● | ● |
| Memory | • Internal | • 256 MB Flash, 128 MB RAM | ● | ● |
| | • External | • Micro SD up to 32 GB | Option | N/A |
| OS | | • Telium TETRA HTML5 | ● | ● |
| SAM | | • 1 | | Option |
| | | • Up to 3 | Option | Option |
| Card Reader(s) | • Magstripe | • ISO1/2/3, 500K reads lifespan | ● | ● |
| | • Second Magstripe (Dual Head) | • ISO1/2, 500K reads lifespan | Option | N/A |
| | • Smart Card | • EMV Level 1, 500K reads lifespan | ● | ● |
| | • Contactless | • EMV Level 1 | ● | ● |
| Camera | | • 2M pixels (QR code library embedded) | Option | N/A |
| Display | • Colour | • 2.8" backlight, QVGA (320x240 pixels) | ● | ● |
| Touchscreen | • Capacitive | • Finger & stylus (1000K lifespan signature) | Option | Option |
| Keypad | | • 15 keys, raised markings, backlit | ● | ● |
| | | • 4 function keys (non-touch version) | Option | Option |
| Audio | • Buzzer | • Stereo | ● | ● |
| | • Audio Jack | • Mono | Option | Option |
| | • Speaker | | Option | Option |

| | | | MODULAR | NON-MODULAR |
|------------------------------|-----------------------------------|--------------------------------------|---------|-------------|
| Terminal Connectivity | • Wired | • Ethernet 10/100 base T | ● | ● |
| | • Wireless | • WiFi and Bluetooth | Option | N/A |
| Terminal Connections | • USB | • USB Host | ● | ● |
| | • Serial | • USB Slave | ● | ● |
| | • Powered USB | • 1 RS232 | ● | ● |
| | • Powered RS 232 | • 12 V (USB retail) | ● | ● |
| | • Powered Ethernet | • 12 V | Option | N/A |
| | • External Power Supply | • POE Compliant with 802.3af (1) | Option | Option |
| Stand Mounting | | • Universal Payment Mount | ● | ● |
| Terminal Size | | • 83 x 180 x 43 mm (3.26x7.08x1.69") | ● | ● |
| Weight | | • 254 g (8.89oz) | ● | ● |
| Environment | • Operating temperature | • 0 to +50°C (32°F to 122°F) | ● | ● |
| | • Storage temperature | • -20 to +70°C (-4°F to 131°F) | ● | ● |
| | • Relative humidity | • 85% HR at +40°C (104°F) | ● | ● |
| Accessories | • Privacy shield (factory mouted) | • PCI compliant | ● | ● |
| | • Stylus kit | | Option | Option |
| Security | • PCI PTS | • PCI PTS 5.x certified | ● | ● |
| | • Anti-removal | • Active connector removal | ● | ● |
| | • Anti-theft | • Kensington lock receptacles | ● | ● |
| | | • Secure mounts available | Option | Option |



www.ingenico.com

ingenico
a Worldline brand